

Email the necessary dimensions using this simple format:

Type #

A: measurement

B: measurement

C: measurement

ETC (all that apply based on type)

A: Sleeve Outside Diameter

B: Sleeve Rough Bore Diameter

C: Sleeve Overall Length

D: Minor Outside Diameter

E: Length of Minor Diameter

F: Flange Outside Diameter

G: Flange Thickness

H: One Flat Width

I: Two Flats Width

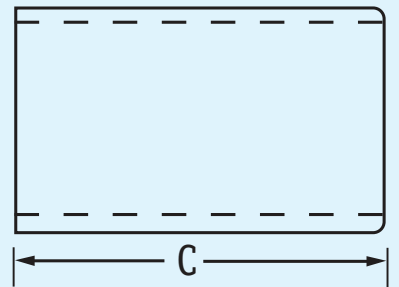
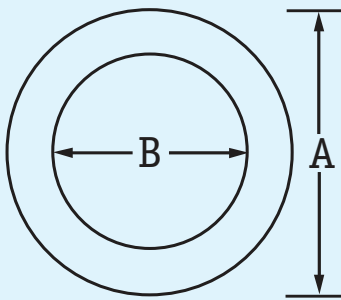
J: Undercut .125 wide .005 - .010

K: Material (POWER DUCTILE™, Gray Iron, Ductile Iron or CG Iron)

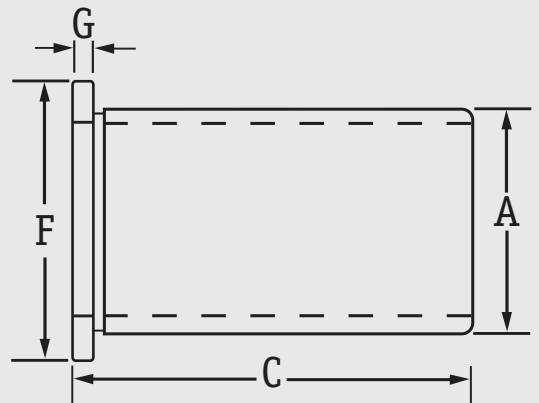
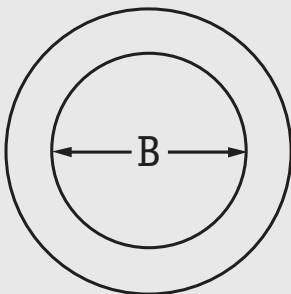
L: Quantity

Note: Chamfers on flange and end of sleeve .010 - .020 x 45 unless otherwise specified

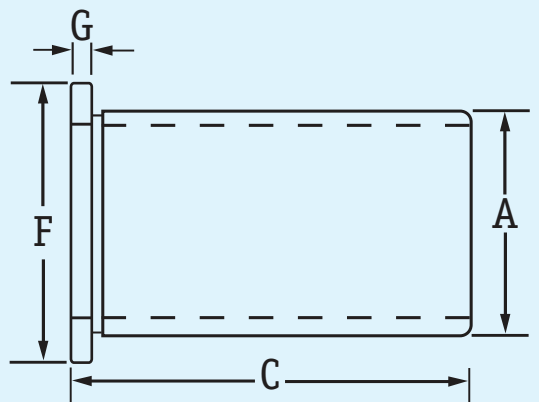
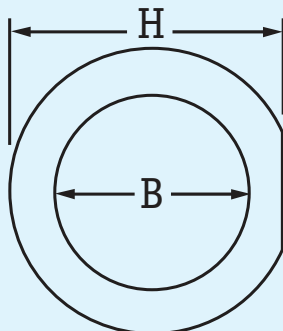
TYPE 1
Press-In
No Flange



TYPE 2
Press-In
Flange
No Flat



TYPE 3
Press-In
Flange
One Flat



TYPE 4
Press-In
Flange
Two Flats

